



User Guide

Getting the best results from your Book Embosser.

Inserting Your Embossing Plate

Our Handheld and Metal-Based embossers come in two parts.



Usually, a poor impression is caused when an embossing plate isn't sitting quite-right in the plier tool. So if you're setting up your embosser for the first time, or if you're not getting as crisp an impression as you'd like; follow the instructions outlined in this document to get the best results.

38mm Embosser Models



38mm plates have **two round sockets** on the underside. Insert the plate with these sockets facing down so that they connect with the **teeth** on the embosser (as shown above).

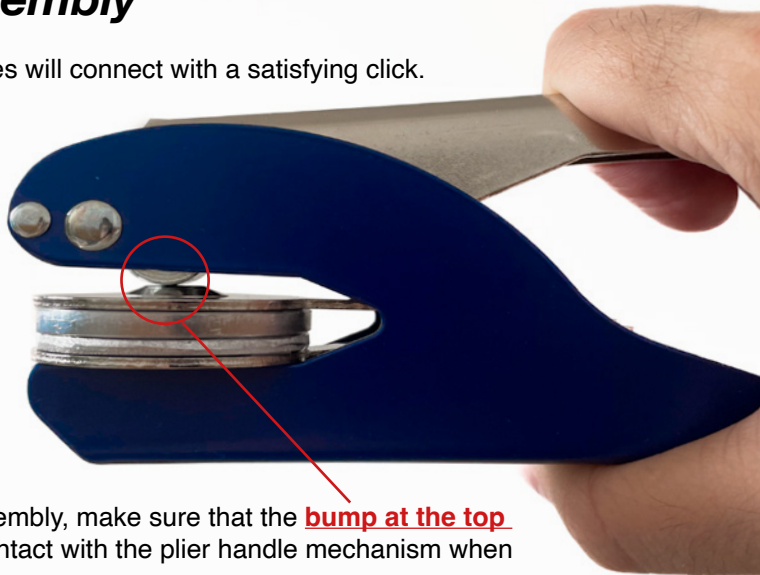
33mm “Mini” Embosser Models



33mm plates have four rectangular sockets on the underside. Insert the plate with these sockets facing down and connect **only the first two sockets** with the teeth on the embosser.

Correct Assembly

38mm and 33mm plates will connect with a satisfying click.



To confirm correct assembly, make sure that the **bump at the top of the plate** makes contact with the plier handle mechanism when squeezed.

Tips for Best Results

Don't need to worry about damaging the paper by squeezing too hard. You need to squeeze quite firmly to achieve a crisp impression.

A successful impression is typically accompanied by a 'futt' sound as the fibres of the paper get squeezed between the embossing plates.

If you're only getting only a partial impression, consider holding the embosser at the back of the handle or using two hands.

Paper Weight

We recommend these embossers for paper weights up-to 100gsm. While most books are printed on paper between 60-90gsm, some coffee table-style books or books for younger children may be printed on slightly heavier paper stock and results may vary.

Still not getting a good impression?

If you've followed these instructions but are unable to get an impression, it's possible your embossing plates may be out of alignment.

This can occur if they get jostled abruptly in the post.

Call Us:

+44 (0) 20 8986 6125

If we can't solve the problem, you can send us back your embossing plates. We'll re-align them for free and refund you the postage.